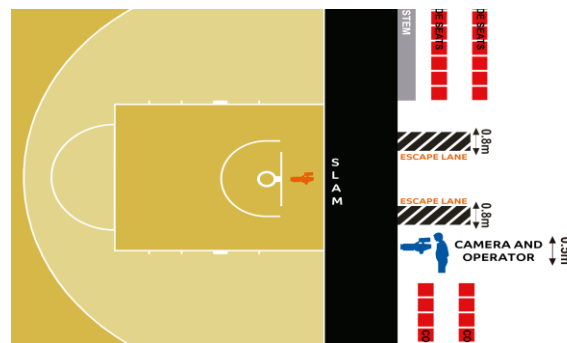


and 3.70m to the camera lens. The horizontal distance will not be less than 6.10m and not more than 12.20m from the edge of the playing court. These cameras will be in line (approximately parallel) with the near sideline and will follow the player with the ball in action, mainly used for replays, and with a super slow motion camera if possible.

3.5.3. Hand-Held Camera Positions

Three hand-held camera positions are to be located on the basketball floor, as follows:

Camera 3 and Camera 4: Two hand-held cameras, at least one with super slow motion (between 14-1 to 21-1) on one side of the basket support structure on each end. These cameras may “rove” between the pre-assigned position on one side of each basket support structure and a pre-assigned position along the endline, on the same side as the main TV camera positions, and will respect the escape lane spaces of 0.8m in width on both sides and their workspace of 0.5m in width. These camera operators may “rove” only during time-outs, breaks between periods and at the beginning of free throws. These cameras will be equipped with live shotgun microphones, and will be placed on a specially designed chair sat at all times when the ball is in play.



In general, there will be an open shot in order to obtain as much action as possible, specially, with less than 10 seconds on the shot clock and in the last minute of each period. This camera shot will always include the player and ball and shot clock, for Instant Replay purposes, of the basket on the left.

All camera operators who work on the basketball floor will have one person working with them who will be the “cable puller” and, as such, be responsible for assuring that camera cables are properly rolled up and placed on the floor in a location that cannot be stepped on or over and will, at all times, be sure that cables do not interfere with play or present a hazard to the players, officials or spectators. If the officials believe that the cables pose a hazard, they may demand that the cable puller immediately rectifies the situation. All photographers and camera operators must stay at least 2m behind the endline at all times.